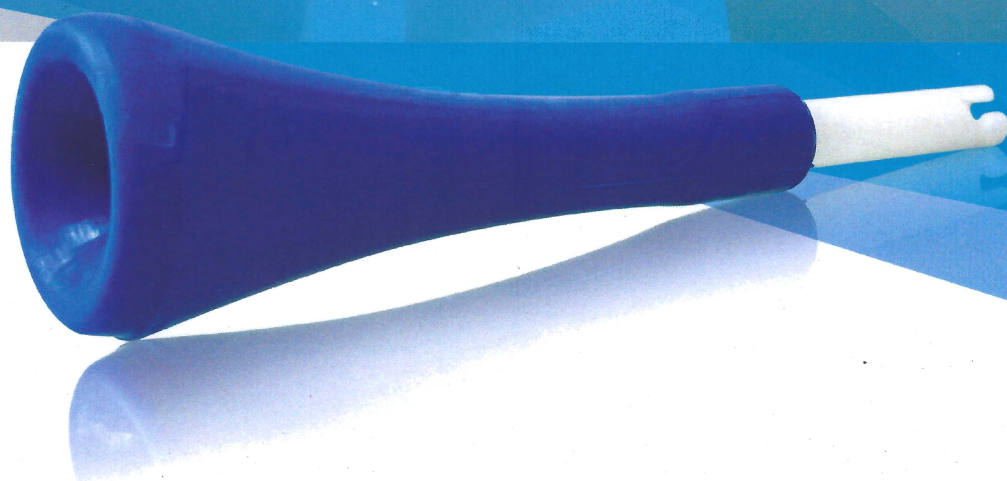




Caring for Emergencies...



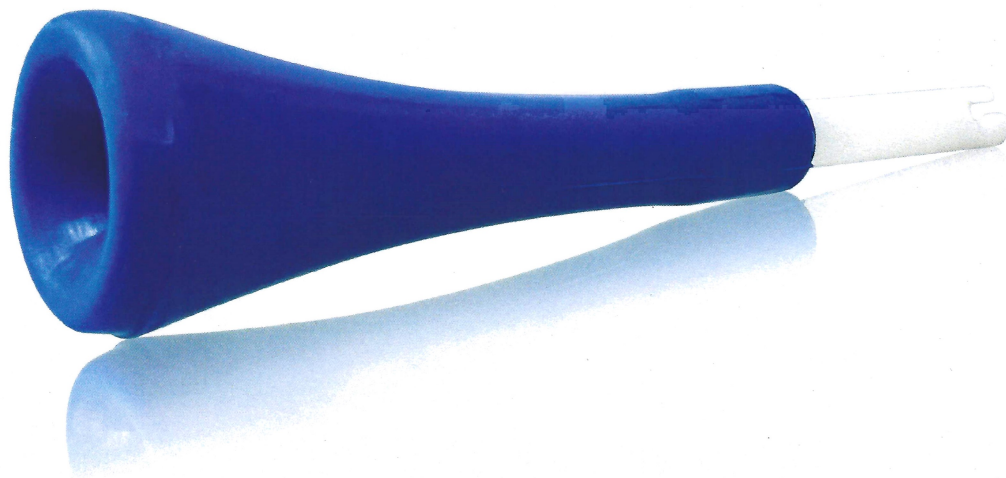
**INSTARIPE**

**RAPID CERVICAL RIPENING DEVICE**

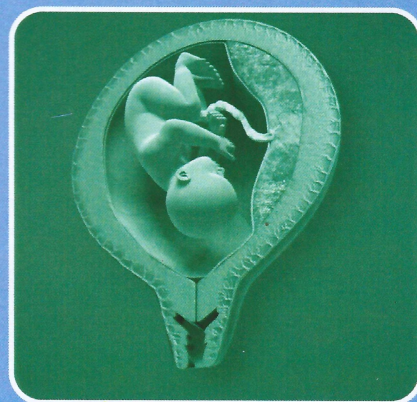


# INSTARIPE

**RAPID CERVICAL RIPENING DEVICE**



Cervical ripening is a normal process of softening and opening the cervix before labor starts. The cervix is stiff and closed through most of pregnancy to hold your baby inside your uterus. But during labor, cervical dilation (widening) allows your baby to pass through your birth canal.



RAPID CERVICAL



## NEED OF CERVICAL RIPENING DEVICE

**The following categories are generally in need of a cervical ripening device:**

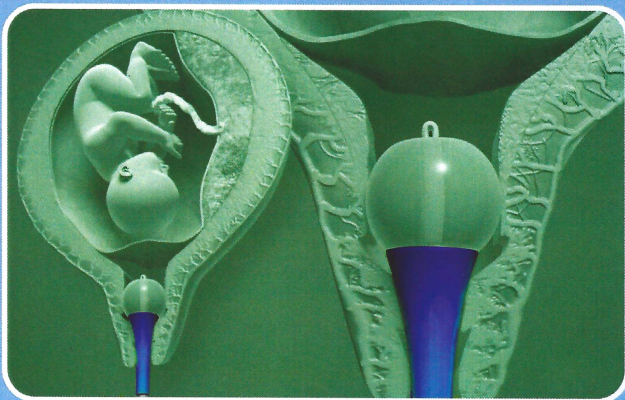
*Have an overdue pregnancy (pregnancy that lasts longer than 41 weeks).*

*Have health risks that threaten your health or the health of the fetus. These may include pre-eclampsia, gestational diabetes or growth restriction.*

*Live far from a hospital and need to plan your labor at a closer location.*

The Foley catheter is introduced through this device and then passed through the cervical canal to reach the uterine cavity. The bulb of the Foley catheter is inflated with 60ml of saline, pulled down against the hole of the device, and fixed to the slit on the side. The cervix is sandwiched between the Foley's bulb and the device under pressure. Pressure will enable rapid ripening and dilation of the cervix.

**This device will help to  
start natural labor or  
even shorten the labor  
processes.**



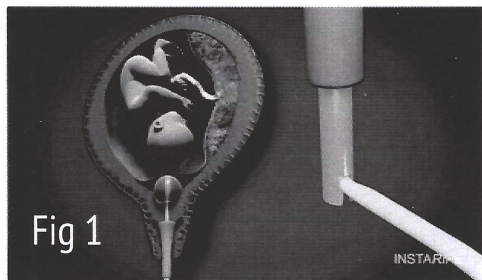
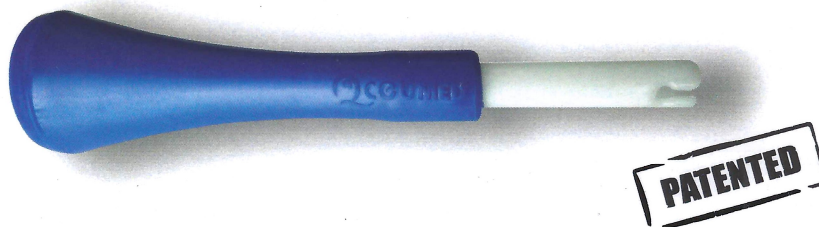
# RIPENING DEVICE



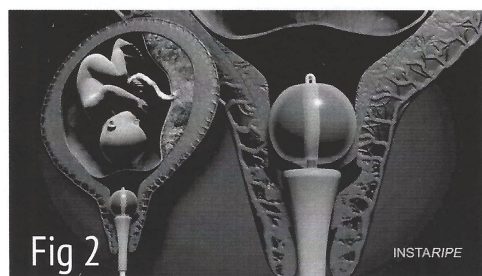
# INSTARIPE

RAPID CERVICAL RIPENING DEVICE

A member of  
**bridgeway**



**Fig 1**  
*Foley catheter pulled down with force and fixed to the side hole of the device under tension.*



**Fig 2**  
*Cervix dilated rapidly due to the pressing effect of Foley's bulb and the ripening device.*

## INSTRUCTIONS FOR USE

1. This device consists of 10mm inner diameter through which Foley catheter is introduced (preferred foleys 14)
2. Foley is then passed through the cervical canal to reach the uterine cavity.
3. The bulb of the Foley catheter is inflated with 60ml of saline and pulled down through the device and fixed to the slit on the side as shown in the figure1.
4. The cervix is sandwiched between the Foley's bulb and the device. An increased surface pressure will develop on both sides of cervix as shown in the figure2.
5. This pressure will enable rapid ripening or dilation of the cervix. Device and Foley fall after dilation.

## TECHNICAL SPECIFICATIONS

Product code	30-3010
Material of conical interface	Medical grade Silicon
Length of Conical interface	10 cm
Wider end diameter of conical interface	3 cm
Narrow end diameter of conical interface	1 cm
Material of Foley lock	Medical grade poly propylene
Diameter of Foley lock	8 mm
Length of Foley lock	6.2 cm



STERILE EO



**BMS**  
Bridgeway Medical Systems

Marketed by:  
**Bridgeway Medical Systems,**  
Peevees House, Kalathiparambu Rd., Kochi-16, Kerala-India  
☎ +91 484 403037 ©india@bridgewayhealthcare.com  
www.bridgewayhealthcare.com

**AANS Speciality Medical®**  
Mobile: +917447500888  
Email: [sales@ansmed.com](mailto:sales@ansmed.com)  
Web: [www.ansmed.com](http://www.ansmed.com)  
Office D304, Aristolia, Sadesatra Nali,  
Hadapsar, Pune 411028,  
Maharashtra, India